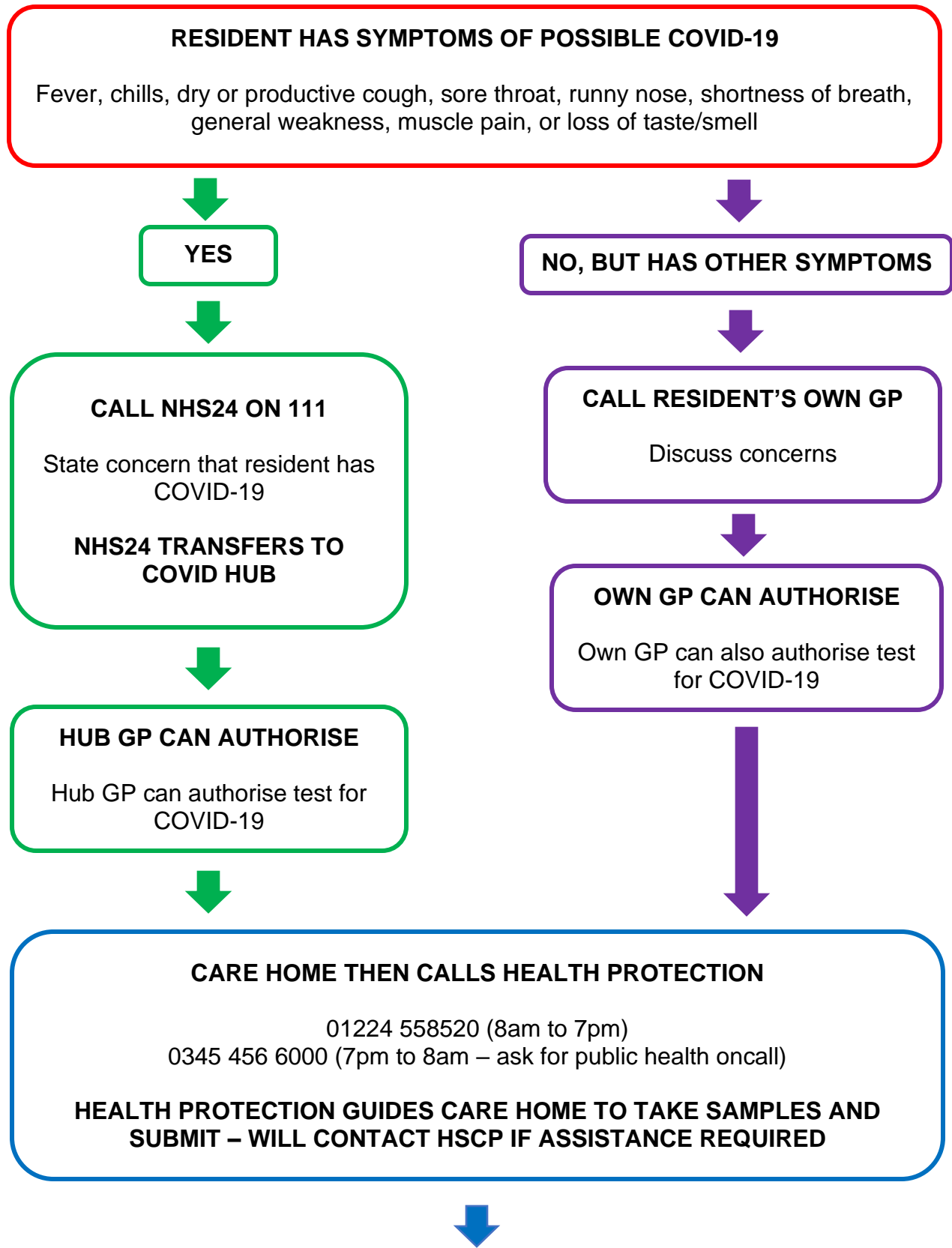


## CARE HOME COVID-19 TESTING FLOWCHART



# CARE HOME COVID-19 TESTING FLOWCHART

HEALTH PROTECTION TEAM CAN CALL FOR ADDITIONAL ASSISTANCE TO SUPPORT THE CARE HOME IF NEEDED

## ABERDEEN CITY

**Monday - Friday:** For support with swabbing OR access to viral swabs contact Community Referral Line (CRL):

**01224 559140**

[gram.citycomrefline@nhs.scot](mailto:gram.citycomrefline@nhs.scot)

**Saturday - Sunday:** For support with swabbing OR access to viral swabs contact Out of Hours Community Nursing: 01224 655510

[gram.oohnursing@nhs.scot](mailto:gram.oohnursing@nhs.scot)

Where to take the swabs:

**Monday - Friday:** Relevant GP Practice

**After last practice pick up or on Saturday/Sunday:** Contact Rico Driver on **07843214623**

**Latest Time for collection is 7pm**

## ABERDEENSHIRE

To access swabs please contact the Aberdeenshire Community Response Team on **01346 585142**

Where to take the swabs:

**Monday - Friday:** Relevant GP Practice

**After last practice pick up or on Saturday/Sunday:** Contact Rico Driver on **07843214623**

**Latest Time for collection is 7pm**

## MORAY

Swabs/sample bags & Virology bags are available from:

- Covid Hub, The Oaks, Elgin 01343 562450

- Seafield Hospital, Buckie 01542 837024

- Stephen Hospital, Dufftown 01340 821625/820215

Where to take the swabs:

**Monday - Friday:** Relevant GP Practice

**Saturday - Sunday:** Dr Grays by 3pm